



BRADCOT

**MORE QUALITY  
MORE CHOICE  
MORE FLEXIBILITY  
MORE INNOVATION  
MORE LUXURY  
MORE BRADCOT**





Since 1963, Bradcot has strived to offer more than their competitors. After all, an awning purchase isn't just about gaining more space, it's about creating a comfortable living environment whilst you're on holiday.

Our full range of awnings come with the highest of specifications, with details that can only come from our years of experience. We use only the finest European coated fabrics from TenCate along with beautiful solution dyed acrylics. Our Easy Aluminium System Frame and our unique Movable Adjustable Pegging System (MAPS) are still very much loved by our customers and today we continue to "WOW" the industry with our Modul-AiR and air frame technology.

Of course, customer service is just as important as the products we sell – we listen carefully to what our customers need and work with them to find the most suitable awning solution, which is why our customers keep coming back for more!



The clever <b>MODUL-AiR</b>	<b>04-07</b>
The exclusive <b>INNOV-AiR</b>	<b>08-09</b>
The durable <b>RESIDENCIA 50</b>	<b>10-11</b>
The luxurious <b>CLASSIC 50</b>	<b>12-13</b>
The simple <b>ASPIRE</b>	<b>14-15</b>



# THE CLEVER MODUL-AiR



**What if you could turn the width of your 260 air porch awning into a 325! How about a 390 or maybe a 455? Or why not go all the way and turn it into a full awning! Well now you can!**

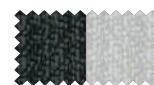
The Modul-AiR's exceptionally clever design has just raised the bar and taken the air awning market to a completely new level.

The Modul-AiR porch awning is available in 260cm & 330cm base sizes. But here's the difference; it can be used as a porch unit only, or it can be turned into a bigger porch or full awning by adding any one, or combination of extensions.

The Modul-AiR's ingenious "frame" features an inflation bladder using the best available TPU of a quality and thickness far in advance of any currently used in the 'air awning' market across the UK and Europe. Its unique design allows filling from one inflation point only (more are fitted to assist with deflation) and, if used in conjunction with our 'E-Pump', can be fully inflated in minutes!

Visit [www.bradcot-awnings.co.uk](http://www.bradcot-awnings.co.uk) for more information.

## COLOUR OPTIONS



CHARCOAL  
with Light Grey

## FRAME OPTIONS



AIR



For more specifications, see page 18.



# MODUL-AiR

## EXTENSION OPTIONS



330 base

330 base + 90 extension

330 base + 130 extension + 90 extension

All extension options are fitted to the left hand facing side only for simplicity, while the optional air annexe fits to the right hand facing side only.

The front closure size is dependent on the full awning size requirement of your caravan. Simply remove the 260 or 330's original side panel and replace with your extension or annexe, and just like the base, the extension and annexe are each inflated from a single inflation point.

A typical full awning size of 1050cm would require a Modul-AiR 330 base, 165cm extension and a 325cm front closure. Likewise, this combination is sure to take care of the short weekend break away where only the 330 base would be required, right through to the large family and friends holiday where the space of a full awning would make things just perfect.



**Air inflating frame** featuring an inflation bladder using the best available TPU (Thermoplastic Polyurethane).



**Storm straps as standard** including belt assemblies and heavy duty pegs for complete protection during winter months.



**Inflates in under 3 mins using our E-Pump** enabling you to start relaxing even sooner (cost option).



**Increase the size of your awning even further by adding the air annexe.** Zipping in place of a side panel in your Modul-AiR, the annexe adds approx. 2.1 x 1.35 metres to your awning and makes a great storage compartment or sleeping area when combined with the inner tent.

AWNING SIZE	BASE OPTION	EXTENSION #1	EXTENSION #2	EXTENSION #3
780	MODUL-AiR 260	FRONT 305cm		
810	MODUL-AiR 260	FRONT 325cm		
840	MODUL-AiR 260	FRONT 325cm		
870	MODUL-AiR 330	FRONT 305cm		
900	MODUL-AiR 260	FRONT 325cm	90cm	
915	MODUL-AiR 260	FRONT 305cm	130cm	
930	MODUL-AiR 260	FRONT 305cm	130cm	
945	MODUL-AiR 260	FRONT 325cm	130cm	
960	MODUL-AiR 330	FRONT 305cm	90cm	
975	MODUL-AiR 330	FRONT 325cm	90cm	
990	MODUL-AiR 330	FRONT 305cm	130cm	
1005	MODUL-AiR 330	FRONT 305cm	130cm	
1020	MODUL-AiR 330	FRONT 325cm	130cm	
1035	MODUL-AiR 330	FRONT 305cm	165cm	
1050	MODUL-AiR 330	FRONT 325cm	165cm	
1065	MODUL-AiR 330	FRONT 325cm	165cm	
1080	MODUL-AiR 330	FRONT 305cm	130cm	90cm
1095	MODUL-AiR 330	FRONT 305cm	130cm	90cm
1110	MODUL-AiR 330	FRONT 325cm	130cm	90cm
1125	MODUL-AiR 330	FRONT 305cm	165cm	90cm
1140	MODUL-AiR 330	FRONT 325cm	130cm	130cm
1155	MODUL-AiR 330	FRONT 305cm	165cm	130cm
1170	MODUL-AiR 330	FRONT 305cm	165cm	130cm
1185	MODUL-AiR 330	FRONT 325cm	165cm	130cm

Note – If you intend to add extensions in the future to make a full awning, you will need to make sure that you purchase the correct size base unit initially.



# THE EXCLUSIVE INNOV-AiR



**Building on the success of Modul-AiR, new for the 2020 season, Innov-AiR! Whilst Modul-AiR offers exceptional flexibility, being a full awning or a porch awning, there are many caravanners out there who only need a full awning, an air inflated one.**

To meet this demand we have utilised many of the design features found in Modul-AiR and amalgamated them into one complete unit without the need to zip sections together. Manufactured in the same TenCate awning fabric and robust 450 micron TPU bladder system, nothing is compromised.

Using the awning could not be easier, thread it through the awning channel just as you would with any full awning, connect the pump and within four or five minutes, depending on size, the awning is fully inflated. Not a pole in sight! All front panels are removable or can be used "Patio" style and those on the attractively shaped ends are ventilated too with clear zipped weather covers.

Visit [www.bradcot-awnings.co.uk](http://www.bradcot-awnings.co.uk) for more information.

## COLOUR OPTIONS



CHARCOAL  
with Light Grey

## FRAME OPTIONS



AIR



Large door fitted  
to both sides



Genuine TenCate  
roof/wall  
awning fabric



Storm straps  
included



Robust 450 micron  
fully integrated  
TPU bladder system  
including lifetime  
guarantee (T&Cs apply)



Full vent panels  
available  
for all removable  
panels (cost option)



Bradcot's  
unique "MAPS"  
(Movable,  
Adjustable,  
Pegging System)



Air inflation  
technology



Removable  
front panels



For more specifications, see page 18.



# THE DURABLE RESIDENCIA 50

Whilst other awnings in our range are ideal for those always on the move, the Residencia 50 is a must for any caravanner lucky enough to enjoy the holiday retreat all season long. Built with long-term use in mind, the Residencia 50 is made using super-strong TenCate all season 'residential' fabric.

The cloth is PVA coated spun polyester and the PVA fibres have moisture absorbent qualities similar to that of cotton, this helps delay the onset of condensation. As with all caravan awnings that are in situ for long periods of time, adequate ventilation is vital to keep your awning looking young and fresh.

The Residencia 50 comes as standard with privacy blinds, Bradcot's unique "MAPS" (Movable, Adjustable, Pegging System), Storm Kit and the all impressive 28mm steel frame. Residencia 50 - the Tonka of all awnings!

Visit [www.bradcot-awnings.co.uk](http://www.bradcot-awnings.co.uk) for more information.

COLOUR OPTIONS



FRAME OPTIONS



\*Cost option



Under canopy poles and Storm kit as standard

Easy glide aluminium curtain rods

Bradcot's unique "MAPS" (Movable, Adjustable, Pegging System)

Impressive 28mm 'Prenox' steel frame with twin locking adjusters

Privacy blinds to all four panels and 2x ventilated side mesh windows

TenCate residential all season polyester wall material

Unique TenCate heat reflective coated polyester roof

One piece seamless roof

Removable front and side panels

For more specifications, see page 18.



# THE LUXURIOUS CLASSIC 50

Our flagship model and a favourite with many of our customers for years, and no wonder! The Classic 50's wall cloth is cut from the finest solution dyed acrylic and is then combined with TenCate's unique heat reflective coated polyester roof. The end result is a truly stunning looking awning that exudes luxury from the touch alone.

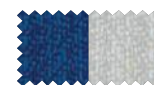
The Classic 50 is ideally suited for those who like to holiday during the British summertime and even more so, those that seek the warmer climates of Spain and France. The Classic 50's beautiful wall material offers great breathability which is further enhanced by two ventilated side mesh windows. More importantly this unique woven fabric is extremely colourfast. This is due to the very special process of "solution dying", where the solution is coloured before the fibres are extruded and finally spun into yarn. The colour therefore penetrates right through.

Visit [www.bradcot-awnings.co.uk](http://www.bradcot-awnings.co.uk) for more information.

## COLOUR OPTIONS



CHARCOAL  
with Light Grey



NAVY BLUE  
with Light Grey



BLACK CHERRY  
with Light Grey

## FRAME OPTIONS



STEEL  
EASY ALLOY\*  
FIBREGLASS\*

\* Cost option



**Removable front  
and side panels**  
with 2x ventilated side  
mesh windows



**One piece  
seamless roof**



**Easy aluminium  
system and fibre  
frame** (cost option)



**Unique TenCate heat  
reflective coated  
polyester roof**



**Easy glide  
aluminium  
curtain rods**



**Breathable  
solution dyed  
acrylic wall fabric**



**Robust 25mm  
"Prenox" steel  
frame as standard**



**Bradcot's unique  
"MAPS" (Movable,  
Adjustable,  
Pegging System)**



For more specifications, see page 18.



# THE SIMPLE ASPIRE

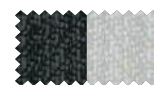
The Aspire has proved to be a huge success and has captured an audience with a discerning eye looking for great value for money. Sparing no expense and with great attention to detail, the Aspire is made from the finest TenCate 'touring' all season polyester. Durable, colourfast and very easy to clean, the Aspire is undoubtedly the best in its class.

At prices you'd certainly look twice at, the Aspire is available in the striking colour combination of charcoal and light grey. Plus comes as standard with the trusted "Prenox" steel frame.

The Aspire's affordability allows for many to now upgrade to one of our lighter weight frames, with the Easy Aluminium System frame being the most popular by far. The Aspire has removable front and side panels and boasts a ventilated mesh window to each side. A matching Aspire tall annexe which can be fitted to either side is also available Aspire – for those who have longed to own a Bradcot.

Visit [www.bradcot-awnings.co.uk](http://www.bradcot-awnings.co.uk) for more information.

## COLOUR OPTIONS



CHARCOAL  
with Light Grey

## FRAME OPTIONS



STEEL  
EASY ALLOY\*  
FIBREGLASS\*

\* Cost option



For more specifications, see page 18.



**Removable front and side panels**  
with 2x ventilated side mesh windows



**Two large 1.1m wide front doors**  
(mobility scooter friendly)



**Easy aluminium system and fibre frame** (cost option)



**Robust 25mm "Prenox" steel frame**  
as standard



**Easy glide aluminium curtain rods**



**TenCate touring all season polyester**  
wall and roof material



**One piece seamless roof**



**Matching tall annexe** available  
to both sides  
(cost option)





# THE SPACIOUS ANNEXES

**You can extend most Bradcot awnings with the Annexe and the Annexe+, providing valuable extra living, sleeping or storage space. They're easy to add and are constructed with the same quality materials and high standards of manufacture as all of Bradcot's awnings.**

All of our annexes come with durable steel frames as standard, but our Easy Aluminium System frame can be specified as a cost option – giving you virtually maintenance-free ease.

A detachable side panel, from awning to annexe, can be turned around and re-zipped into the annexe entrance for extra privacy, or a tidy area to hide bikes and other equipment.

Alternatively, the awning side panel can be removed to create an extended walk-through living area. For extra comfort and privacy, you can add a Bradcot Inner Tent. There is also an Aspire Annexe available, constructed from TenCate coated polyester, to complement the Aspire range.



See specifications on page 18.

# A GUIDE TO SIZING

**Bradcot full awnings are available in a total of 24 different sizes and are designed to fit nearly all makes of caravan.**

Bradcot is the only manufacturer to produce caravan awnings in sizes that rise in 15cm incremental increases, starting from 780cm and going all the way up to 1185cm. This guarantees you the most perfect fit of any caravan awning available today.

To determine the correct size for your caravan, measure ground to ground from a point vertically below the awning channel at one end, around the channel of the caravan, to a point vertically below the awning channel at the other end (in cm, from A to B as shown in the illustration). The caravan should be on level ground and normally loaded when this measurement is obtained.



Use our handy online guide:  
**[bradcot-awnings.co.uk/4-easy-steps](http://bradcot-awnings.co.uk/4-easy-steps)**

A-B Length (cm)	Awning Size
766–795	780
796–825	810
826–855	840
856–885	870
886–908	900
909–923	915
924–938	930
939–953	945
954–968	960
969–983	975
984–998	990
999–1013	1005
1014–1028	1020
1029–1043	1035
1044–1058	1050
1059–1073	1065
1074–1088	1080
1089–1103	1095
1104–1118	1110
1119–1133	1125
1134–1148	1140
1149–1163	1155
1164–1178	1170
1179–1193	1185





# THE ESSENTIAL SPECIFICATIONS

	MODUL-AiR 260	MODUL-AiR 330	INNOV-AiR	RESIDENCIA 50	CLASSIC 50	ASPIRE	ANNEXE	ANNEXE +	ASPIRE ANNEXE	MODUL-AiR ANNEXE
FEATURES										
Zips (mm)	10.5	10.5	10.5	10.5	10.5	10.5	10.5	10.5	10.5	10.5
Front doors				2	2	2				
Side doors	2	2	2	4	4	4				
Side ventilation with zipped cover	2	2	2	2	2	2		1		
Zipped privacy blind				4						
Detachable front panels	2	3	4/5	2	2**	2**				
Detachable side panels				2	2	2				
Veranda effect, front	✓	✓	✓	£	£	£				
Veranda effect, side				£	£	£				
Front ventilator with zip				✓	✓					
Ventilator above windows	✓	✓	✓	✓	✓		✓		✓	✓
Coated polyester splashwalls and polyethylene mud walls	✓	✓	✓	✓	✓	✓	✓	✓	✓	✓
Draught cloth and wheel arch cover	✓	✓	✓	✓	✓	✓				
Easy fit curtains with rods	✓	✓	✓	✓	✓	✓				
Easy fit bracket pads	n/a	n/a	n/a	✓	✓	✓				
“MAPS” (Moveable, Adjustable, Pegging System)	✓	✓	✓	✓	✓		✓	✓		✓
Adjustable/detachable pegging						✓			✓	
Steel frame as standard	n/a	n/a	n/a	✓	✓	✓	✓	✓	✓	
Glass fibre frame	n/a	n/a	n/a		£	£				
Easy Aluminium System frame	n/a	n/a	n/a	£***	£	£	£	£	£	
Recommended for seasonal use				✓						

	MODUL-AiR 260	MODUL-AiR 330	INNOV-AiR	RESIDENCIA 50	CLASSIC 50	ASPIRE	ANNEXE	ANNEXE +	ASPIRE ANNEXE	MODUL-AiR ANNEXE
ROOF										
Heat reflective TenCate coated polyester				✓	✓		✓	✓		
TenCate coated polyester	✓	✓	✓			✓			✓	✓
WALLS										
TenCate coated polyester	✓	✓	✓	✓		✓			✓	✓
Solution dyed acrylic					✓		✓	✓		
SIZE										
Size range in cm *			900-1155	900-1185	780-1185**	780-1125**				
Rail length in cm *	260	330								
Rail height in cm *	235-250	235-250								
Projection in cm *	260	260	260	243	243	240+	135	135	135	152
Length (ground floor measurements) in cm *	260-320	330-390					210	210	210	190
Air awning actual canvas weight (approx) in kg	15	17.5	22/27							8
WARRANTY										
Manufacturer guarantee (years)	3	3	3	1	3	1	3	3	1	3
5 year UV degradation warranty	✓	✓	✓	✓	✓	✓	✓	✓	✓	✓
10 year fade resist					✓		✓	✓		
OPTIONAL EXTRAS										
Annexe fitting	✓	✓		✓	✓	✓				
Veranda effect poles				✓	✓	✓				
Bradcot Storm Kit	S	S	S	S	✓	✓				S

S = Standard £ = Cost option \*All measurements are approximate and subject to a tolerance of +/-5% \*\*780–810 awnings have one front panel only and are manufactured to special order only  
\*\*\*As a ‘Touring Option’ only at full price, not the ‘Option Price’ – the standard frame MUST be supplied  
Visit [www.bradcot-awnings.co.uk](http://www.bradcot-awnings.co.uk) for more information.





### **Bradcot Awnings**

Jubilee Way, Thackley Old Road, Shipley, Bradford. BD18 1QG

Tel: **01274 306 811**

Email: **info@bradcot-awnings.co.uk**

**www.bradcot-awnings.co.uk**

Bradcot reserves the right to make changes in line with technical progress. Technical details, material colours and dimensions are correct at time of going to press (Feb 2020).

23179 Designed and produced by Kal-Group.com

